

Application for the 19th International Young Geomorphology Meeting

19.06.25 - 22.06.25

Losheim, Germany
(near Merzig, Saarland)



YOUNG GEOMORPHOLOGY



Contact

Last name:

First name:

Affiliation:

E-mail:

Career status

I am currently:

a Bachelor student

a Master student

a PhD student (beginning)

a PhD student (about half way through)

a PhD student (about to finish)

a Postdoc

Contribution

I apply for: Oral pres. (12 min pres. + 3 min disc.)

Spotlight (5 min pres. + 10 min disc.)

Poster

Listen only

Accomodation

Accommodation and the meeting itself will be held in the "Ökodorf Losheim" (in Losheim am See, Germany). Beds will be distributed upon arrival.

Board

I prefer:

vegetarian food

vegan food

all that's available

Excursion I will attend

Guided geomorphological excursion to the surrounding area on June 20th preceding the YG-meeting.

Arrival

Due to our remote venue, we offer convenient pick-up and drop-off services from **Merzig (Saarland)** train station. Please select

If you want to attend the excursion:

No pick-up

Thu, 19.06. 6pm

Thu, 19.06. 7pm

Thu, 19.06. 8pm (late arrival)

If you DO NOT want to attend the excursion:

Fri, 20.06. 5pm

Fri, 20.06. 6pm

Fri, 20.06. 7pm

Please e-mail the filled out form to jgtreffen@gmail.com by **15th of April 2025**. If you don't know your topic yet, but want to present, you can hand in your topic by **15th of May 2025**.

The meeting fee for the 19th International Young Geomorphology Meeting is **50 €** including full board. Travel costs are not included and have to be covered by each participant individually.

If you have registered successfully (see page 2), you will receive an e-mail with further details after 1st May 2025. The number of participants is limited to **40**.

Thanks a lot,

Andreas, Bastian, Dennis, Isabel, Jannik, Katharina, Lars, Lingxiao, Lisa, Philipp, Salome

For information on payment and topic submission, please see page 2.





Journey

Journey directions to Ökodorf Losheim

The venue is located in in Losheim am See close to Merzig in the Saarland. Address: Zum Stausee 312, 66679 Losheim am See, Germany. Free parking is possible. <http://www.ökodorf-losheim.de/>

By public transport (regional trains)

Arrival: From the central station in Frankfurt (Main) take RE 3 to Saarbrücken, change to RE 1 (to Koblenz) or RB 71 (to Trier) and leave at Merzig. From Trier central station take RB 71 (to Homburg (Saar)) or RE 1 (to Mannheim) and leave at Merzig. There are multiple options every hour. We will pick you up at the station in Merzig.

Dropoff: we will drop you off at Merzig train station. Our scheduled drop-off times are for the trains leaving Merzig on Sunday, 22.06 at 2:10 pm, or 3:10 pm or 4:10 pm.

Payment

Your application is only accepted with receipt of payment! Note that spots are limited. **Deadline: 15th of April, 2025.**

Payment details:

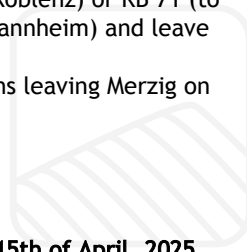
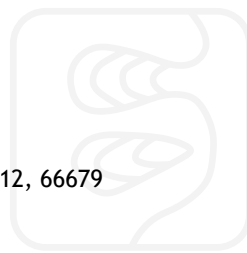
Philipp Garbe

IBAN: DE43 7904 0047 0210 4230 00

BIC: COBADEFFXXX

Topic

Please send your topic until May 15th, 2025 to jgtreffen@googlemail.com



M. Wiedmann

Supported by



Deutsche Gesellschaft für Geomorphologie e.V.

